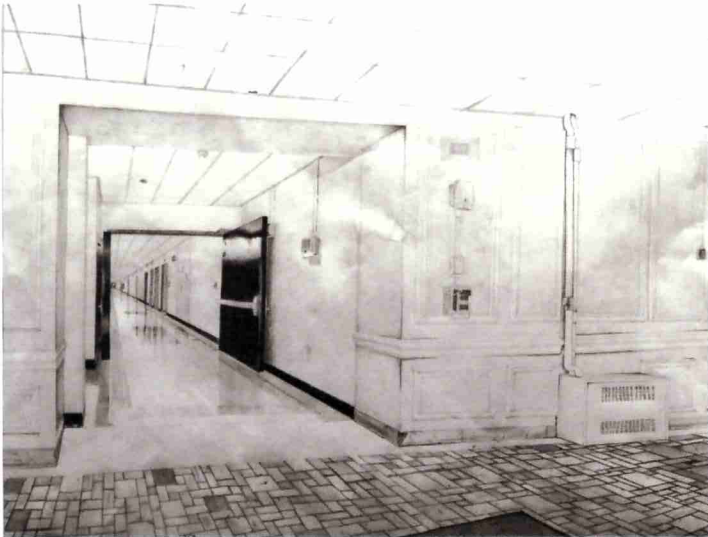


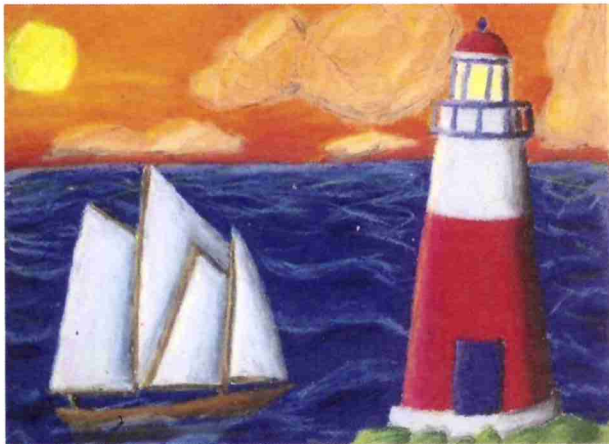
Human Resources



Krantz Medeus
Stamford High School, Grade 12



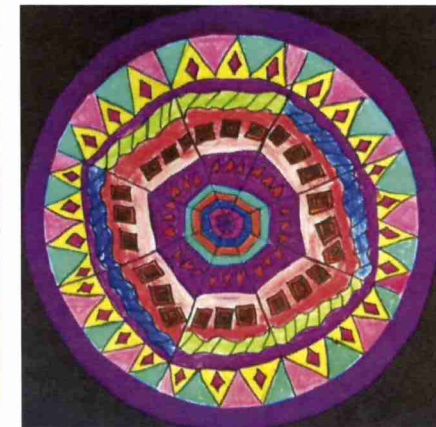
Sophia Abbazia
Rogers International School, Grade 6



Charlotte Long
Turn of River Middle School, Grade 8



Lilly Lapine
Scofield Magnet Middle School, Grade 7



Emily Soraluz
Stark School, Grade 4

2018-19 HUMAN RESOURCES BUDGET STAMFORD PUBLIC SCHOOLS

Object		2014-15 Actual	2015-16 Actual	2016-17 Actual	2017-18 Budget	2017-18 Adjusted	2018-19 Budget	Variance +/- to 2017-18
101	Teachers	1,354.5	1,350.6	1,373.8	1,366.0	1,366.6	1,381.6	15.0
102	Administrative	58.9	59.4	61.4	61.4	61.4	63.6	2.2
	Total Certified	1,413.4	1,410.0	1,435.2	1,427.4	1,428.0	1,445.2	17.2
113	Administrative - Non-Certified	7.0	7.0	7.0	8.0	8.0	8.0	0.0
114	Clerical	80.4	71.4	81.4	79.9	79.9	80.4	0.5
115	Paraeducators	359.0	332.0	331.0	342.0	363.0	364.0	1.0
116	Custodial/Mechanics	154.0	153.0	155.0	153.0	153.0	153.0	0.0
117	Other	37.0	36.5	39.5	39.5	39.5	40.5	1.0
	Total Non-Certified	637.4	599.9	613.9	622.4	643.4	645.9	2.5
	Total Operating Budget	2,050.8	2,009.9	2,049.1	2,049.8	2,071.4	2,091.1	19.7
101	Teachers	115.2	111.2	118.7	128.7	122.1	129.1	7.0
102	Administrative	4.6	4.6	4.6	4.6	4.6	4.4	(0.2)
	Total Certified	119.8	115.8	123.3	133.3	126.7	133.5	6.8
113	Administrative - Non-Certified	2.0	1.0	3.4	2.0	1.0	1.0	0.0
114	Clerical	3.3	4.3	4.3	4.3	5.3	4.8	(0.5)
115	Paraeducators	38.0	54.0	54.0	54.0	61.0	60.0	(1.0)
117	Other							
	Total Non-Certified	43.3	59.3	61.7	60.3	67.3	65.8	(1.5)
	Total Grants Budget	163.1	175.1	185.0	193.6	194.0	199.3	5.3
101	Teachers	1,469.7	1,461.8	1,492.5	1,494.7	1,488.7	1,510.7	22.0
102	Administrative	63.5	64.0	66.0	66.0	66.0	68.0	2.0
	Total Certified	1,533.2	1,525.8	1,558.5	1,560.7	1,554.7	1,578.7	24.0
113	Administrative - Non-Certified	9.0	8.0	10.4	10.0	9.0	9.0	0.0
114	Clerical	83.7	75.7	85.7	84.2	85.2	85.2	0.0
115	Paraeducators	397.0	386.0	385.0	396.0	424.0	424.0	0.0
116	Custodial/Mechanics	154.0	153.0	155.0	153.0	153.0	153.0	0.0
117	Other	37.0	36.5	39.5	39.5	39.5	40.5	1.0
	Total Non-Certified	680.7	659.2	675.6	682.7	710.7	711.7	1.0
	Total System Budget	2,213.9	2,185.0	2,234.1	2,243.4	2,265.4	2,290.4	25.0

2018-19 BUDGET OF THE STAMFORD PUBLIC SCHOOLS
Operating and Grants Budget Positions - Additions/Reductions ()

No.	Object	2017-18 Positions	Elementary	Middle School	High School	Special Education	Pupil Svcs	Bilingual ELL	HS Athl Dir	DW C&I	From Grants	Contingency	2018-19 Positions	Change
101	Teachers	1,367.6	(5.5)	1.5	2.0	7.5	3.5	2.0	(2.0)		1.0	4.0	1,381.6	14.0
102	Administrative	61.4							2.0		0.2		63.6	2.2
113	Admin - Non-Certified	8.0											8.0	0.0
114	Clerical	79.9									0.5		80.4	0.5
115	Paraeducators	364.0	(1.0)					1.0					364.0	0.0
116	Custodial/Mechanics	153.0											153.0	0.0
117	Other	39.5		1.0									40.5	1.0
Total Operating Budget		2,073.4	(6.5)	2.5	2.0	7.5	3.5	3.0	0.0	0.0	1.7	4.0	2,091.1	17.7
101	Teachers	122.1	7.5			1.0					(1.5)		129.1	7.0
102	Administrative	4.6									(0.2)		4.4	(0.2)
113	Admin - Non-Certified	1.0											1.0	0.0
114	Clerical	5.3									(0.5)		4.8	(0.5)
115	Paraeducators	61.0									(1.0)		60.0	(1.0)
117	Other												0.0	
Total Grants Budget		194.0	7.5	0.0	0.0	1.0	0.0	0.0	0.0	0.0	(3.2)	0.0	199.3	5.3
Total System Budget		2,267.4	1.0	2.5	2.0	8.5	3.5	3.0	0.0	0.0	(1.5)	4.0	2,290.4	23.0

Stamford Public Schools

2018-19 Position Budget Additions/Reductions ()

Superintendent's Recommended Budget - January 12, 2018

Board of Education 2018-19 Approved Budget - February 13, 2018

Final Budget - June 7, 2018

No.	Object	Operating Budget	Grant Budget	Total Budget
101	Teachers - adjusted budget 2017-18	1,366.6	122.1	1,488.7
	Elementary Teachers based on enrollment - Davenport -1, Hart +1, KT Murphy -1, Newfield -1, Northeast +1, Roxbury -2, Stillmeadow -1, Westover -1	(5.0)		(5.0)
	Kindergarten Teachers based on enrollment - Davenport +.5, Springdale -1	(0.5)		(0.5)
	Contingencies for elementary enrollment	3.0		3.0
	Strawberry Hill -- an expansion of Rogers International School - Add Grade 3 (+ 6 Grant Funded positions)		6.0	6.0
	Middle School Teachers based on enrollment - Cloonan +3, Dolan +2.5, Turn of River +1, Scofield -5	1.5		1.5
	High School Teachers based on enrollment - English Coach SHS, English Coach Westhill	2.0		2.0
	Special Education Teachers - add 6.5 Special Education plus 2 Speech & Language	8.5		8.5
	Add Bilingual/EL positions at Turn of River 1.0, Stamford High .5, Westhill .5, Contingency 1.0	3.0		3.0
	Add Psychology - District Wide	1.0		1.0
	Reduction Arts Program Teacher (Special Education assignment)	(1.0)		
	Reduction in Title II grant		(0.5)	(0.5)
	Change High School Athletic Directors to Administrator Positions	(2.0)		(2.0)
	High School Class Size - Contingency SHS	1.0		1.0
	Guidance Counsellor - Rippowam	0.5		0.5
	Psychology at Cloonan .5, Rippowam .5	1.0		1.0
	Special Education Contingency	1.0		1.0
	Reallocate Title IIA position from Grant to Operating	1.0	(1.0)	-
	English as a Second Language (ESL) - Turn of River	(1.0)		(1.0)
	Apples IEP Compliance Teacher		1.0	1.0
	Design Teacher - Rogers		1.0	1.0
	Reading Teacher - Strawberry Hill		0.5	0.5
Teacher Budget 2018-19		1,380.6	129.1	1,510.7

Stamford Public Schools

2018-19 Position Budget Additions/Reductions ()

Superintendent's Recommended Budget - January 12, 2018

Board of Education 2018-19 Approved Budget - February 13, 2018

Final Budget - June 7, 2018

No.	Object	Operating Budget	Grant Budget	Total Budget
102	Administrator- adjusted budget 2017-18	61.4	4.6	66.0
	Add Athletic Directors at Stamford High and Westhill	2.0		2.0
	Grant reduction -Title I	0.2	(0.2)	0.0
	Administrative Budget 2018-19	63.6	4.4	68.0
113	Administrative - Non-Certified - adjusted budget 2017-18	8.0	1.0	9.0
	Admin Non-Cert. Budget 2018-19	8.0	1.0	9.0
114	Clerical- adjusted budget 2017-18	79.9	5.3	85.2
	Reclass OSS from grants to operating budget	0.5	(0.5)	0.0
	Clerical Budget 2018-19	80.4	4.8	85.2
115	Paraeducators- adjusted budget 2017-18	363.0	61.0	424.0
	Add Bilingual para due to grant reduction	1.0	(1.0)	0.0
	Reduce elementary Kindergarten para	(1.0)		(1.0)
	Reduce high school media paras (Stamford High -1, Westhill -1)	(2.0)		(2.0)
	Restore high school media paras (Stamford High -1, Westhill -1)	2.0		2.0
	Contingency Positon - Instructional Para	1.0		1.0
	Paraeducators Budget 2018-19	364.0	60.0	424.0
116	Custodial/Mechanics- adjusted budget 2017-18	153.0		153.0
	Custodial/Mechanic Budget 2017-18	153.0	0.0	153.0
117	Other- adjusted budget 2017-18	39.5		39.5
	Add Security Guard at Scofield	1.0		1.0
	Other Budget 2018-19	40.5	0.0	40.5
	Total BOE Budget 2018-19	2,090.1	199.3	2,290.4
	Changes from 2018-19 Budget	18.7	5.3	25.0